

## FEATURES :

- *Low Loss*
- *Small Size*

## SPECIFICATIONS

Passband 1 Frequency, MHz @1dB points	30...480
Passband 1 Insertion Loss @CF, [dB] max.	0.5
Stopband 1 low, [MHz]	DC to 17
Stopband 1 low, rejection [dB], min	55
Rejection @510MHz, [dB] min	7.0
Stopband 1 high, [MHz]	900...5000
Stopband 1 high, rejection [dB], min	55

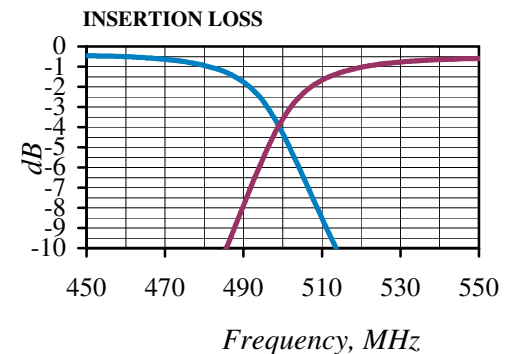
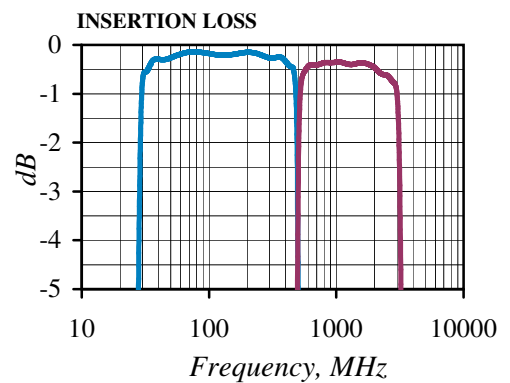
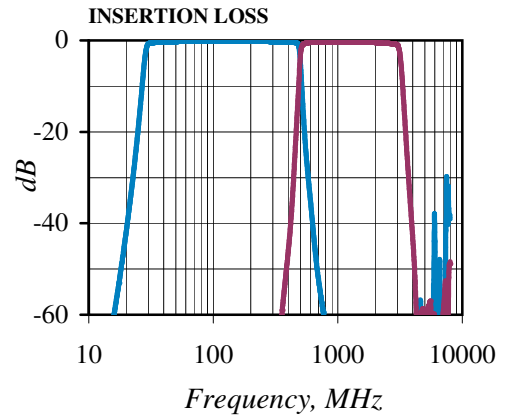
Passband 2 Frequency, MHz @1dB points	520...3000
Passband 2 Insertion Loss @CF, [dB] max.	0.7
Stopband 2 low, [MHz]	DC to 250
Stopband 2 low, rejection [dB], min	55
Rejection @490MHz, [dB] min	7.0
Stopband 2 high, [MHz]	5000...7000
Stopband 2 high, rejection [dB], min	55
VSWR , max	1.5:1

## Operating Characteristics

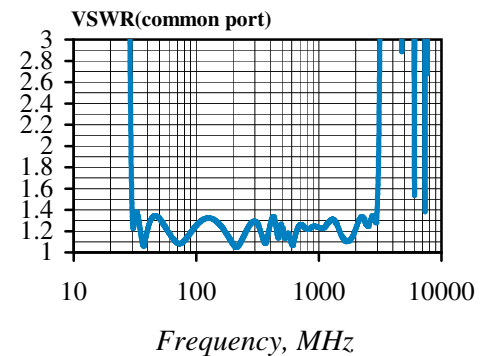
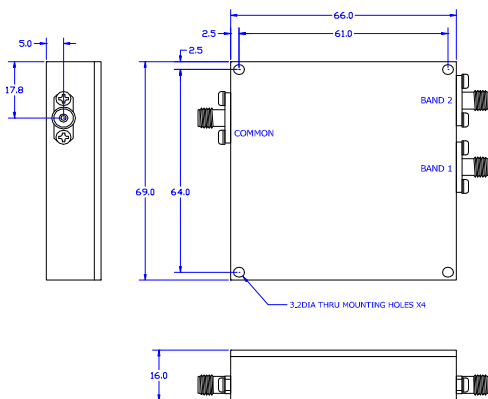
Input Power, [W] with matched load	2
Impedance, [Ohm]	50
Operating temperature, [°C]	-20 to +70
Vibration	Designed to shipborne
Shock	Designed to shipborne

Connectors	SMA, female
------------	-------------

## Typical Performance



## Outline drawing dimensions in mm



Specifications Subject To Change Without Notice  
Rev. C 14.06.2024

