

FEATURES :

- Cryogenic
- Wide Bandwidth
- High Directivity

SPECIFICATIONS

Frequency Range, [GHz]	2 - 18
Coupling, with reference to Input, [dB]	20 ± 1.0
Coupling flatness, max [dB]	±0.5
True Insertion Loss, max [dB]	0.6
Directivity, min [dB]	15
VSWR	1.3:1

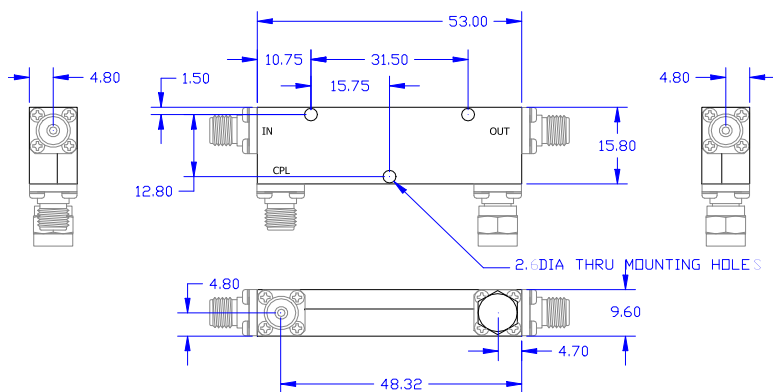
Operating Characteristics

Input Power, [W] with matched loads	10
Impedance, [Ohm]	50
Operating Temperature	-190°C

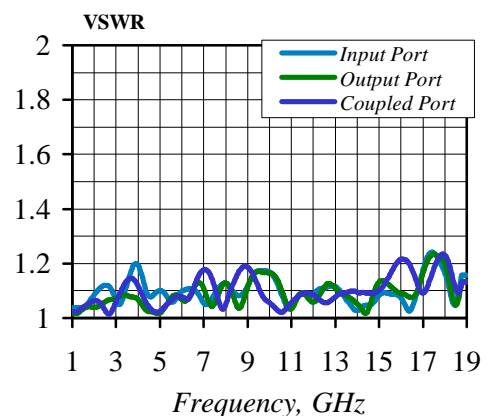
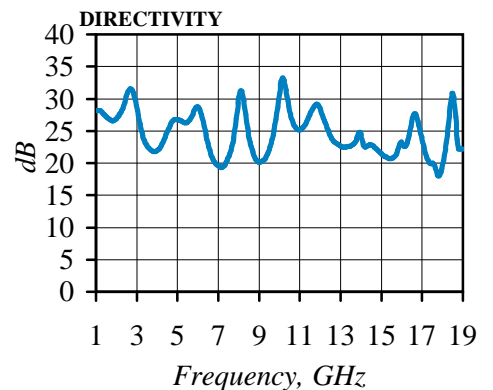
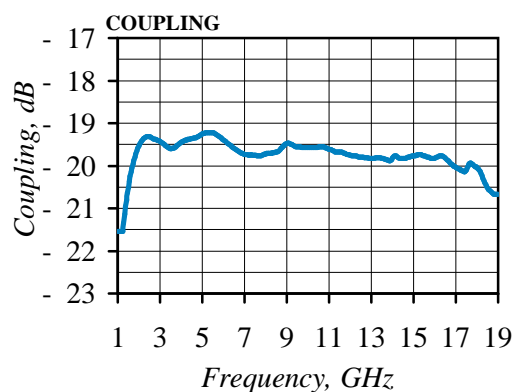
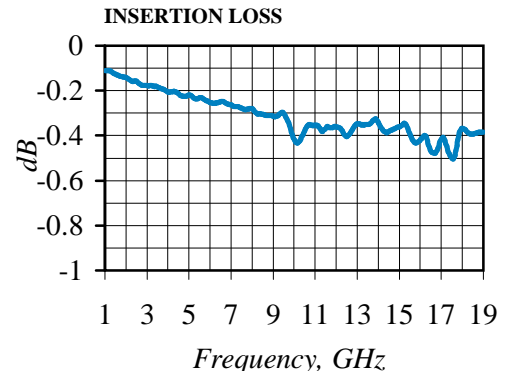
Ordering Information

Model No.	CPL2000-18000-20-C
-----------	--------------------

Outline drawing dimensions in mm



Typical Performance



Specifications Subject To Change Without Notice